

Lyle Fuller  
#313, 14925 - 100 Ave  
Surrey, B.C., Canada  
V3R 1J6

Oct. 21/91

Dr. Jack Sarfatti  
Hebrew Academy of San Francisco  
P.O. Box 26548  
San Francisco, California U.S.A.  
94126

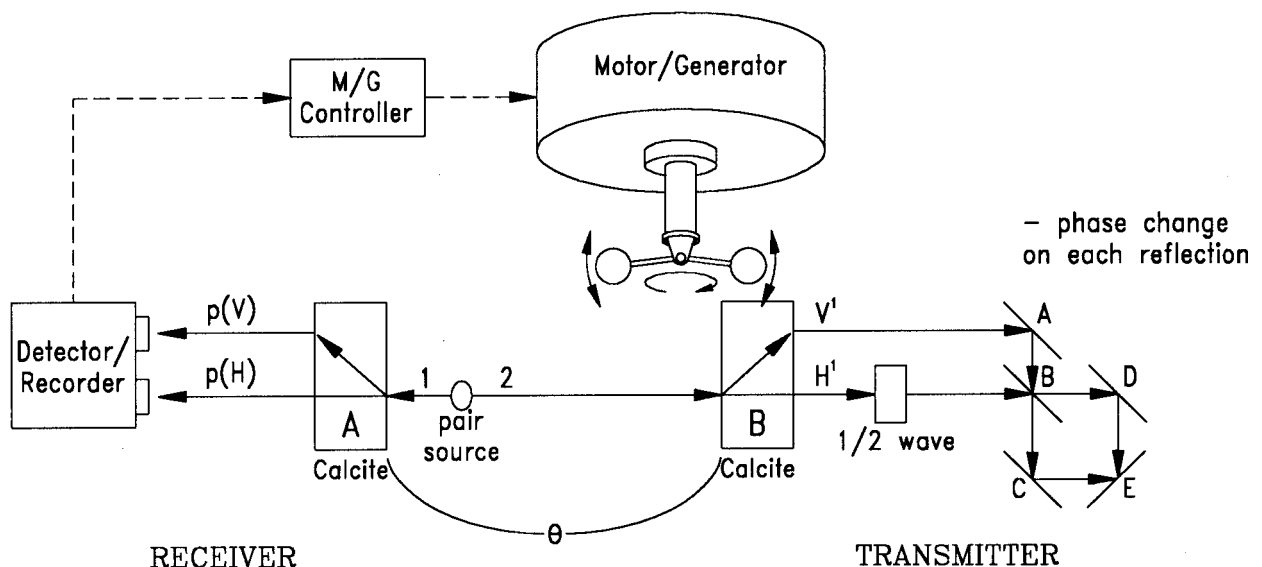
Dear Dr. Sarfatti,

Your recent article in *Physics Essays* (Design for a Superluminal Signalling Device) very clearly describes the lines of thought associated with causal paradoxes. Several years ago, I concluded that, if precognition is a real phenomenon, global self-consistency is the only logical view.

In section 1.13 (Autocidal Causal Anomaly) - To prevent a causal paradox: “nonlocal quantum force acts at a 4D distance to cause an error in order to keep the loop in time logically self-consistent.” Could such an “error” be used as an energy source? You have likely considered this, but I thought to write you in any case.

If a working device based on your theory is built, perhaps it could be incorporated into a very simple “causal” or “paradox” engine.

The device is set up so that the flight time of the photon from the pair source to transmitter B is longer than the flight time to receiver A. A motor/generator with weights on a spinning shaft is suspended above B’s calcite crystal. The motor spins the shaft at sufficient rpm that centrifugal force positions the weights so they just clear the top of the crystal.



The photons are emitted. A's signal is detected and recorded, so that the nonlocal parameter (angle of transmitter calcite crystal) is known. Now, the motor is changed to generator mode. Any slowing of the generator results in the weights falling due to gravity, and striking the transmitter's calcite crystal, changing the crystal angle. Clearly this would create a causal paradox (at least if there are no parallel universes).

To prevent this paradox and preserve self-consistency, perhaps nonlocal quantum forces (zero point fluctuations?) will act to prevent the generator from slowing down. If this is the case, energy may be extracted from the generator until photon 2 arrives at the transmitter.

Another possibility is that local space-time distortion around the weight/crystal area will prevent movement of the crystal. If this is the case the system can be re-configured to produce useful energy from such metric distortion.

In my opinion a causal engine cannot be built using precognition as the basis because the "receiver" (person) and the "transmitter" (event) are enveloped within the self-consistent loop, and some method of "objective" observation of the loop is necessary, in order to actively attempt to create a causal paradox. It is difficult to imagine how such an objective observation could be made (or to even determine the extent and nature of such a loop).

I look forward to reading your *Relativity Without Causality*.

Yours truly,

Lyle Fuller